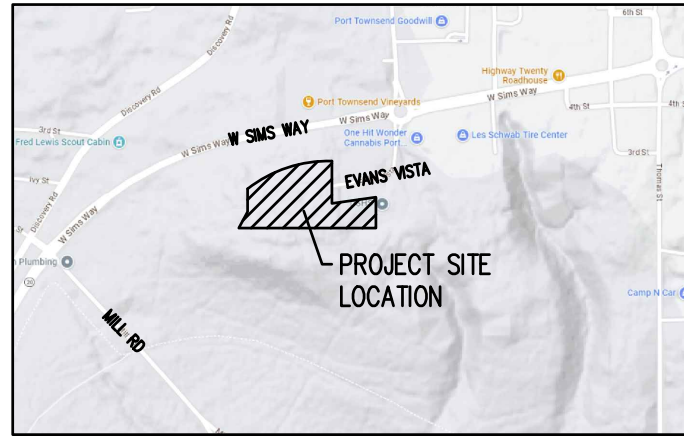


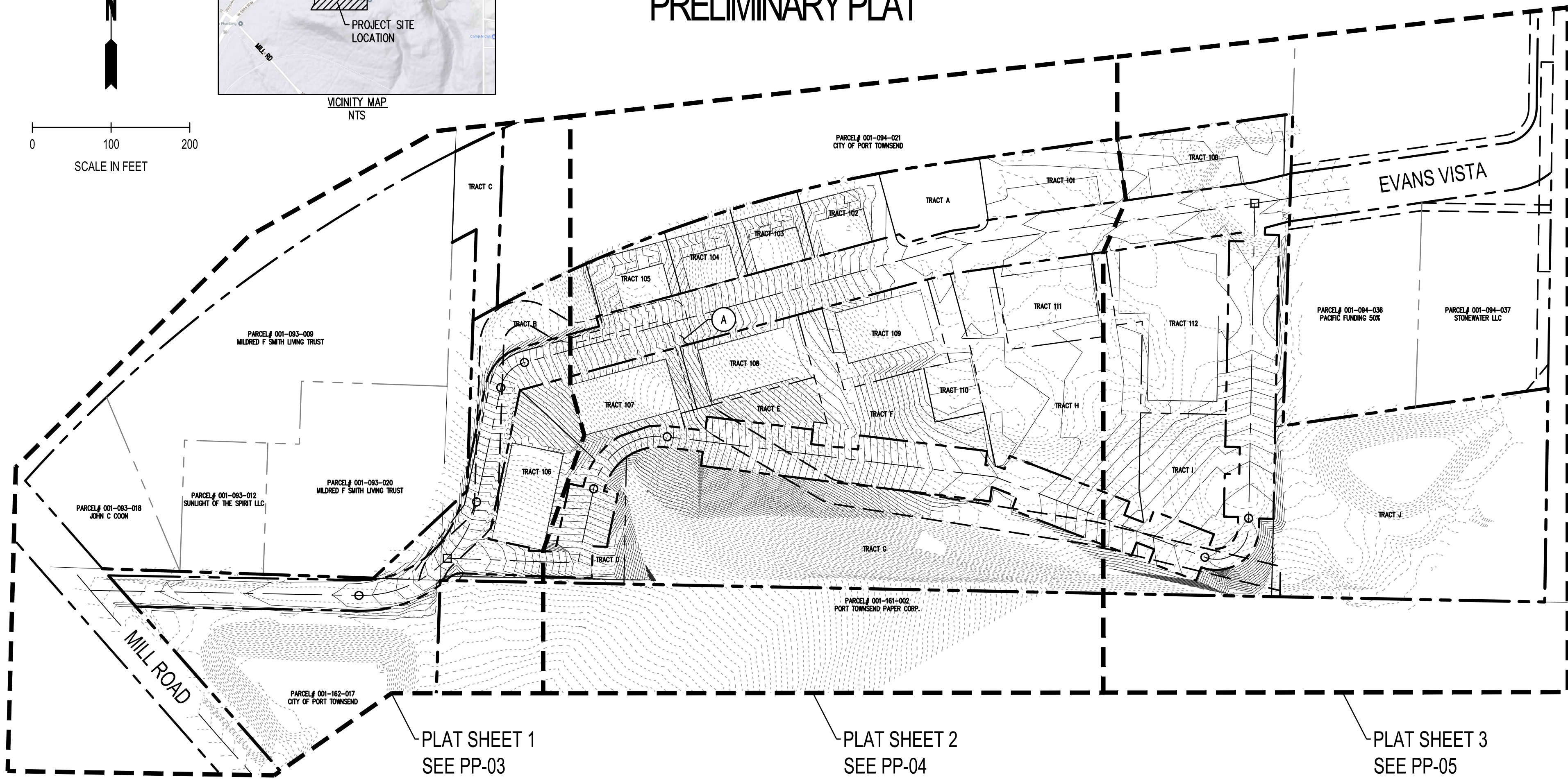
Jan 18, 2024 9:52:48am - User rikki.martinez
 N:\PROJECTS\835 THOMAS ARCHITECTURE STUDIO, INC\22-000827 PORT TOWNSEND EVANS VISTA HOUSING DEVELOPMENT\CADD\22-000827 PP-01.DWG



VICINITY MAP
NTS

0 100 200
SCALE IN FEET

EVANS VISTA HOUSING DEVELOPMENT PRELIMINARY PLAT



LEGEND

	RIGHT-OF-WAY
	PROPERTY LINE
	EXISTING EASEMENT
	PROPOSED EASEMENT
	TRACT LINE
	PLAT SHEET MATCHLINE
	UTILITY EASEMENT
	POINT OF INTERSECTION
	END OF CURVE

NOTES:

- SURVEY PERFORMED AUGUST, 2023 BY VAN ALLER SURVEYING
- BASIS OF BEARINGS:
WASHINGTON COORDINATE SYSTEM OF 1983, ADJUSTMENT 1991, NORTH ZONE, NORTH AMERICAN DATUM (NAD 83/91). DETERMINED FROM FILED MEASUREMENTS TO CITY OF PORT TOWNSEND GEODETIC CONTROL POINTS #0010981 AND #0011621.
- VERTICAL DATUM:
NORTH AMERICAN VERTICAL DATUM (NAVD) OF 1988 ESTABLISHED BY FIELD TIES TO CITY OF PORT TOWNSEND GEODETIC CONTROL POINTS #0010981 AND #0011621
- ALL TRACT BOUNDARY SEGMENTS NOT LABELED WITH BEARING DIMENSIONS ARE PARALLEL TO ADJACENT SEGMENTS WITH BEARING LABELS DISPLAYED

DATE	REVISIONS	JOB NO:	DRAWN BY:	APPROVED BY:	DATE:
		22-000827	K. GANS	W. HOLM	DECEMBER 2023

SCJ ALLIANCE
CONSULTING SERVICES

8730 TALLON LANE NE, SUITE 200, LACEY, WA 98516
 P: 360.352.1465
 SCJALLIANCE.COM

SHEET INDEX

EVANS VISTA HOUSING DEVELOPMENT
PRELIMINARY PLAT
PORT TOWNSEND, WA

SEAL:

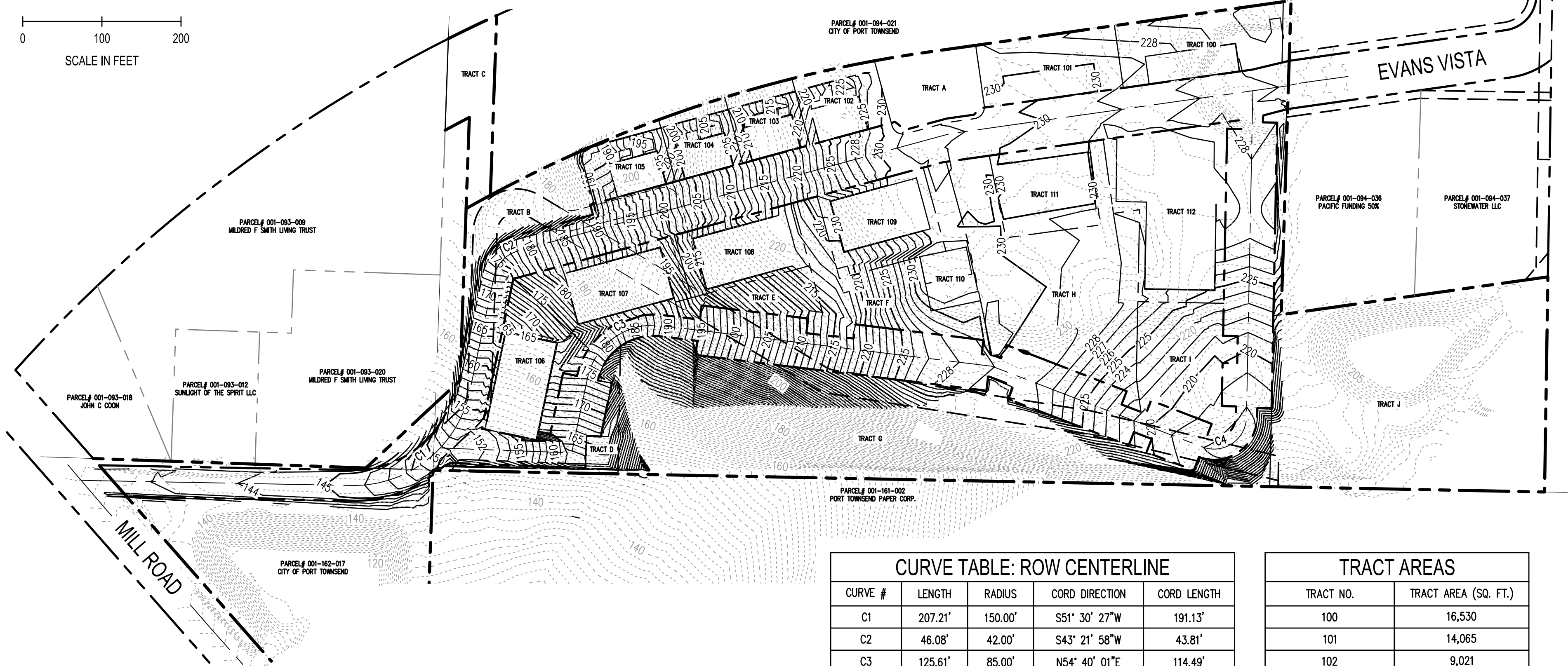
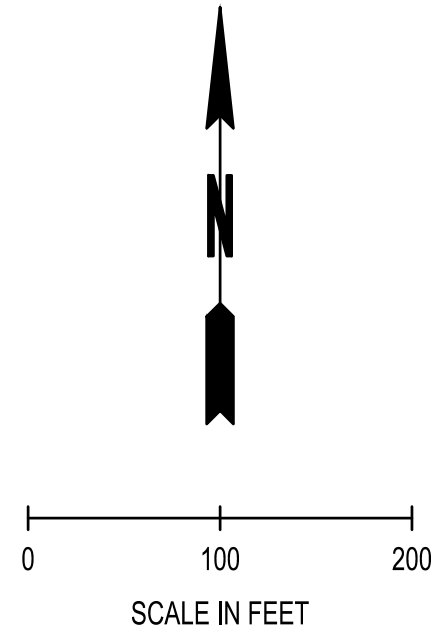


DRAWING NO:

PP-01

1 OF 5

Jan 18, 2024 9:52:55am - User rikki.martinez
 N:\PROJECTS\835 THOMAS ARCHITECTURE STUDIO, INC\22-000827 PORT TOWNSEND EVANS VISTA HOUSING DEVELOPMENT\CADD\22-000827 PP-02.DWG



CURVE TABLE: ROW CENTERLINE

CURVE #	LENGTH	RADIUS	CORD DIRECTION	CORD LENGTH
C1	207.21'	150.00'	S51° 30' 27"W	191.13'
C2	46.08'	42.00'	S43° 21' 58"W	43.81'
C3	125.61'	85.00'	N54° 40' 01"E	114.49'
C4	78.25'	41.00'	N55° 47' 46"E	66.91'

TRACT AREAS

TRACT NO.	TRACT AREA (SQ. FT.)
100	16,530
101	14,065
102	9,021
103	7,653
104	7,392
105	8,008
106	15,404
107	16,767
108	12,710
109	14,962
110	7,782
111	13,129
112	27,946
A	10,788
B	12,817
C	10,299
D	5,210
E	6,692
F	17,395
G	88,849
H	42,665
I	16,547
J	84,512

REVISIONS	DATE

SCJ ALLIANCE
 CONSULTING SERVICES

8730 TALLON LANE NE, SUITE 200, LACEY, WA 98516
 P: 360.352.1465
 SCJALLIANCE.COM

TABLES & CONTOUR MAP

**EVANS VISTA HOUSING DEVELOPMENT
 PRELIMINARY PLAT
 PORT TOWNSEND, WA**

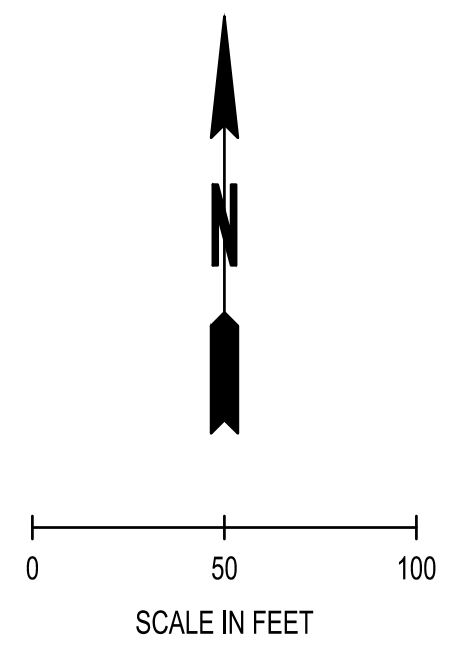
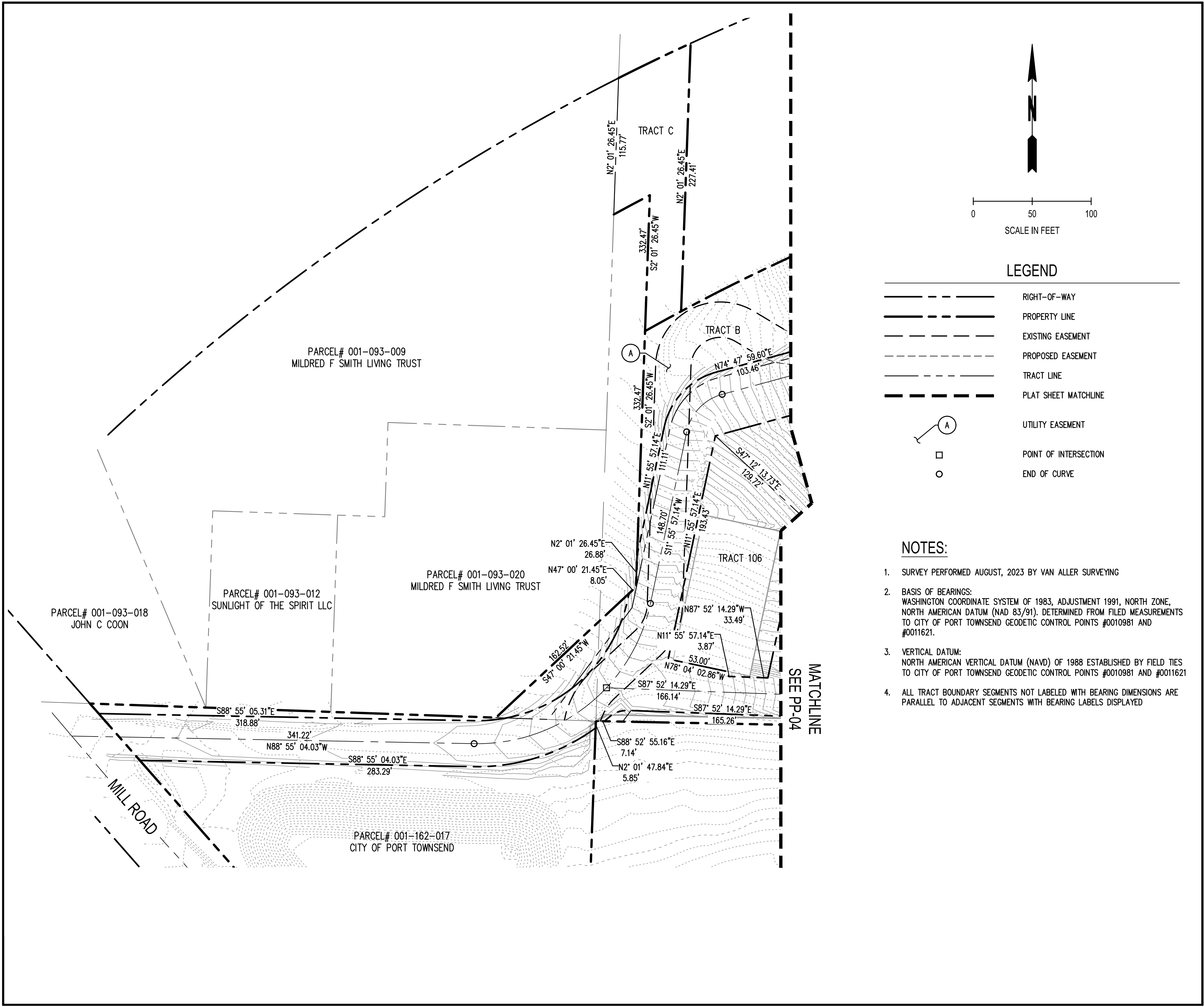
SEAL:

1/24/24

DRAWING NO:
 PP-02

2 OF 5

Jan 18, 2024 9:53:06am - User rikki.martinez
 N:\PROJECTS\835 THOMAS ARCHITECTURE STUDIO, INC\22-000827 PORT TOWNSEND EVANS VISTA HOUSING DEVELOPMENT\CADD\22-000827 PP-03.DWG



LEGEND

- RIGHT-OF-WAY
- PROPERTY LINE
- EXISTING EASEMENT
- PROPOSED EASEMENT
- TRACT LINE
- PLAT SHEET MATCHLINE
- UTILITY EASEMENT
- POINT OF INTERSECTION
- END OF CURVE

NOTES:

1. SURVEY PERFORMED AUGUST, 2023 BY VAN ALLER SURVEYING
2. BASIS OF BEARINGS: WASHINGTON COORDINATE SYSTEM OF 1983, ADJUSTMENT 1991, NORTH ZONE, NORTH AMERICAN DATUM (NAD 83/91). DETERMINED FROM FILED MEASUREMENTS TO CITY OF PORT TOWNSEND GEODETIC CONTROL POINTS #0010981 AND #0011621.
3. VERTICAL DATUM: NORTH AMERICAN VERTICAL DATUM (NAVD) OF 1988 ESTABLISHED BY FIELD TIES TO CITY OF PORT TOWNSEND GEODETIC CONTROL POINTS #0010981 AND #0011621.
4. ALL TRACT BOUNDARY SEGMENTS NOT LABELED WITH BEARING DIMENSIONS ARE PARALLEL TO ADJACENT SEGMENTS WITH BEARING LABELS DISPLAYED

REVISIONS	DATE

SCJ ALLIANCE
 CONSULTING SERVICES

8730 TALLON LANE NE, SUITE 200, LACEY, WA 98516
 P: 360.352.1465
 SCJALLIANCE.COM

PLAT SHEET 1

EVANS VISTA HOUSING DEVELOPMENT
 PRELIMINARY PLAT
 PORT TOWNSEND, WA

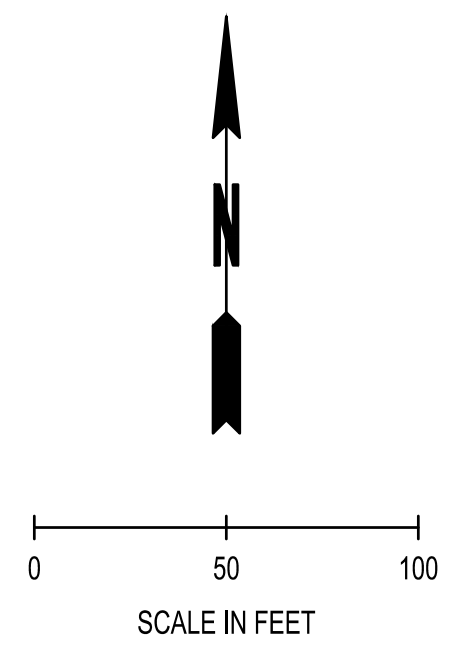
SEAL:

1/24/24

DRAWING NO:
 PP-03

3 OF 5

Jan 18, 2024 9:53:12am - User: rikki.martinez
 N:\PROJECTS\835 THOMAS ARCHITECTURE STUDIO, INC\22-000827 PORT TOWNSEND EVANS VISTA HOUSING DEVELOPMENT\CADD\22-000827 PP-03.DWG



- LEGEND**
- RIGHT-OF-WAY
 - PROPERTY LINE
 - EXISTING EASEMENT
 - PROPOSED EASEMENT
 - TRACT LINE
 - PLAT SHEET MATCHLINE
 - UTILITY EASEMENT
 - POINT OF INTERSECTION
 - END OF CURVE

NOTES:

1. SURVEY PERFORMED AUGUST, 2023 BY VAN ALLER SURVEYING
2. BASIS OF BEARINGS: WASHINGTON COORDINATE SYSTEM OF 1983, ADJUSTMENT 1991, NORTH ZONE, NORTH AMERICAN DATUM (NAD 83/91). DETERMINED FROM FILED MEASUREMENTS TO CITY OF PORT TOWNSEND GEODETIC CONTROL POINTS #0010981 AND #0011621.
3. VERTICAL DATUM: NORTH AMERICAN VERTICAL DATUM (NAVD) OF 1988 ESTABLISHED BY FIELD TIES TO CITY OF PORT TOWNSEND GEODETIC CONTROL POINTS #0010981 AND #0011621.
4. ALL TRACT BOUNDARY SEGMENTS NOT LABELED WITH BEARING DIMENSIONS ARE PARALLEL TO ADJACENT SEGMENTS WITH BEARING LABELS DISPLAYED

REVISIONS	DATE

SCJ ALLIANCE
 CONSULTING SERVICES

8730 TALLON LANE NE, SUITE 200, LACEY, WA 98516
 P: 360.352.1465
 SCJALLIANCE.COM

PLAT SHEET 2

EVANS VISTA HOUSING DEVELOPMENT
PRELIMINARY PLAT
 PORT TOWNSEND, WA

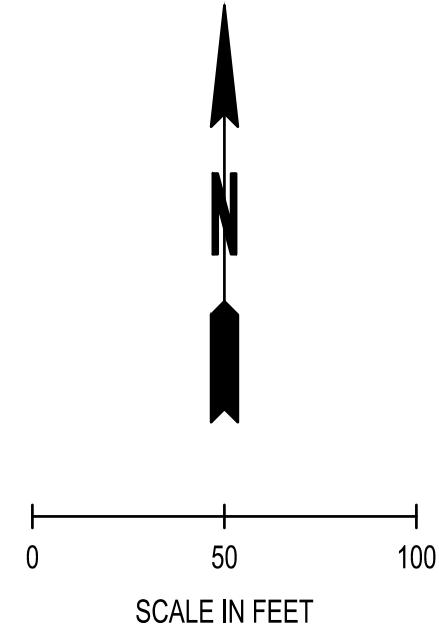
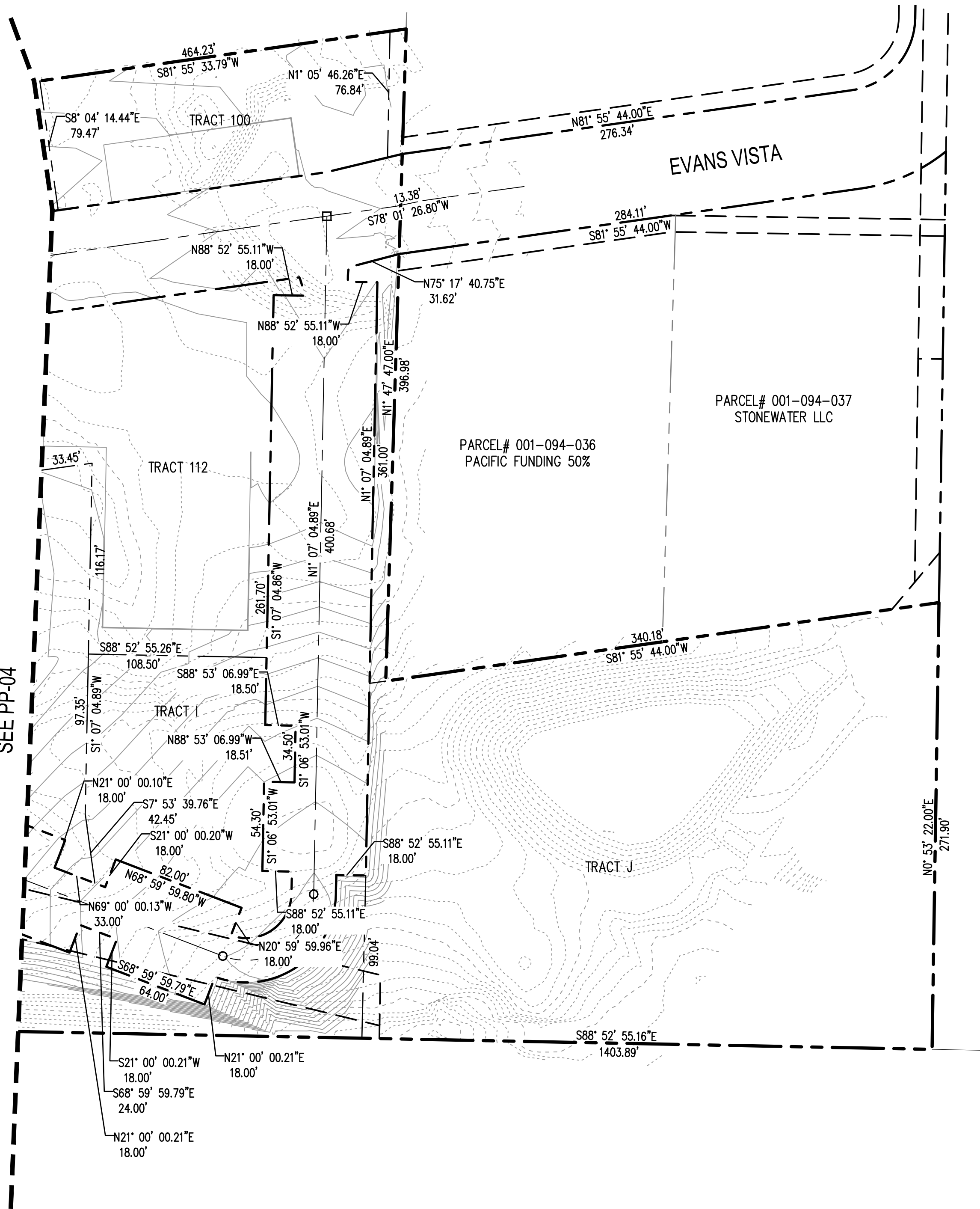
SEAL:

1/24/24

DRAWING NO:
 PP-04

4 OF 5

MATCHLINE
SEE PP-04



LEGEND

	RIGHT-OF-WAY
	PROPERTY LINE
	EXISTING EASEMENT
	PROPOSED EASEMENT
	TRACT LINE
	PLAT SHEET MATCHLINE
	UTILITY EASEMENT
	POINT OF INTERSECTION
	END OF CURVE

NOTES:

1. SURVEY PERFORMED AUGUST, 2023 BY VAN ALLER SURVEYING
2. BASIS OF BEARINGS:
WASHINGTON COORDINATE SYSTEM OF 1983, ADJUSTMENT 1991, NORTH ZONE, NORTH AMERICAN DATUM (NAD 83/91). DETERMINED FROM FILED MEASUREMENTS TO CITY OF PORT TOWNSEND GEODETIC CONTROL POINTS #0010981 AND #0011621.
3. VERTICAL DATUM:
NORTH AMERICAN VERTICAL DATUM (NAVD) OF 1988 ESTABLISHED BY FIELD TIES TO CITY OF PORT TOWNSEND GEODETIC CONTROL POINTS #0010981 AND #0011621.
4. ALL TRACT BOUNDARY SEGMENTS NOT LABELED WITH BEARING DIMENSIONS ARE PARALLEL TO ADJACENT SEGMENTS WITH BEARING LABELS DISPLAYED

REVISIONS	DATE

SCJ ALLIANCE
CONSULTING SERVICES

8730 TALLON LANE NE, SUITE 200, LACEY, WA 98516
 P: 360.352.1465
 SCJALLIANCE.COM

PLAT SHEET 3

EVANS VISTA HOUSING DEVELOPMENT
PRELIMINARY PLAT
PORT TOWNSEND, WA

SEAL:

1/24/24

DRAWING NO:
PP-05

5 OF 5