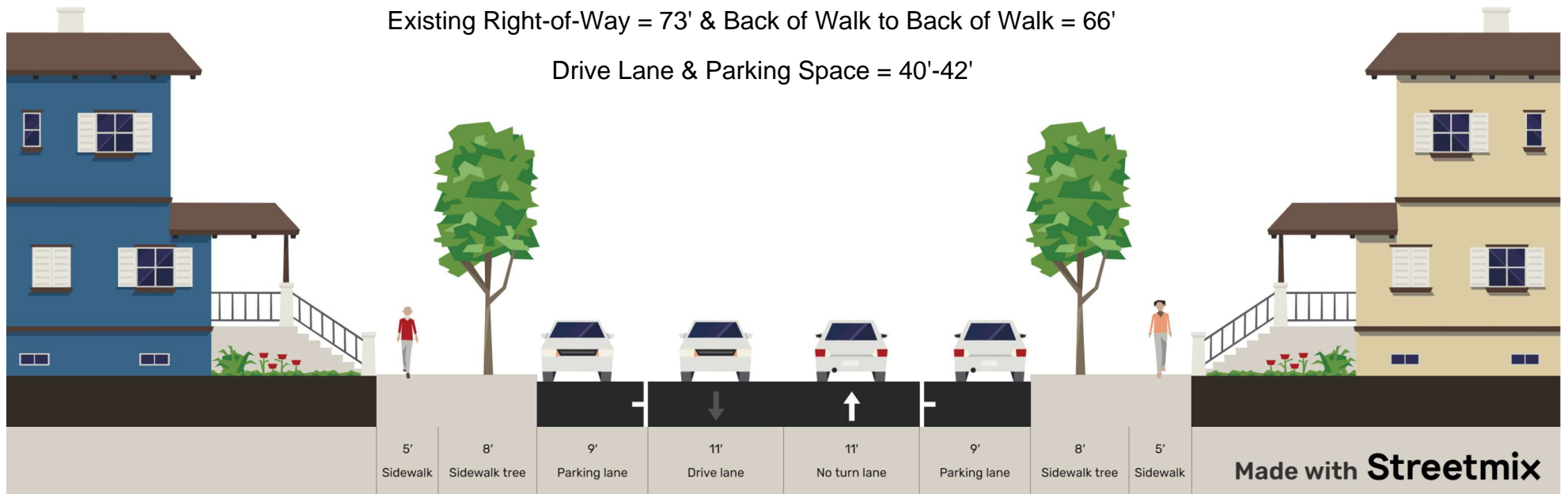


Lawrence Street (Harrison to Walker) - Existing

Viewpoint = Northeast to Southwest

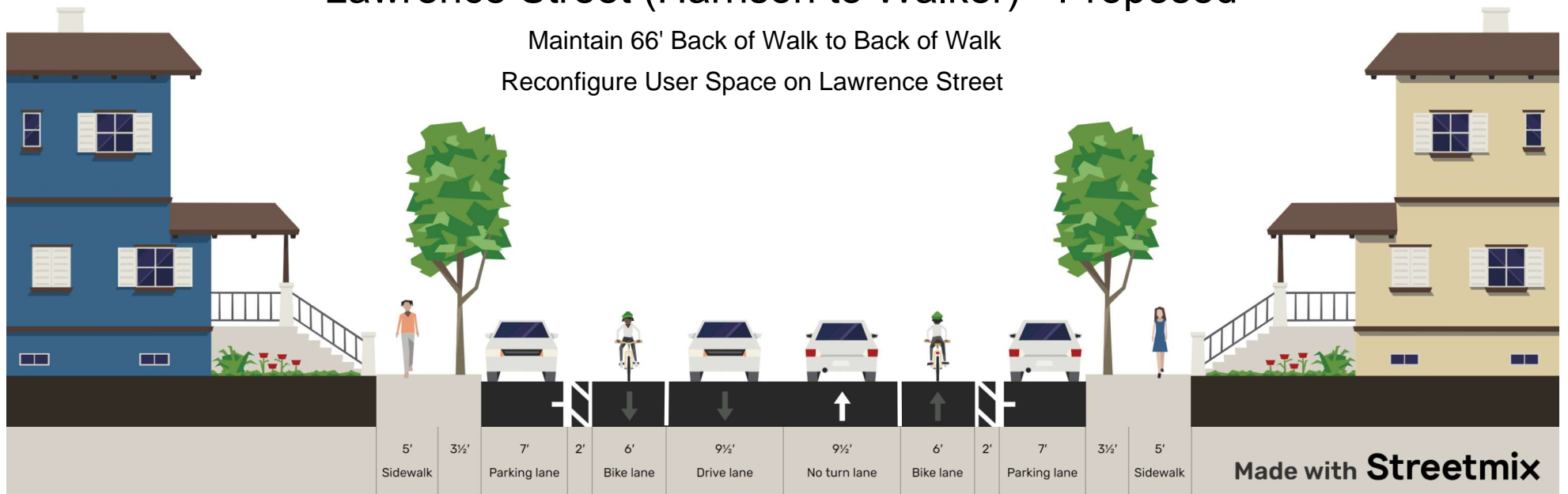
Existing Right-of-Way = 73' & Back of Walk to Back of Walk = 66'

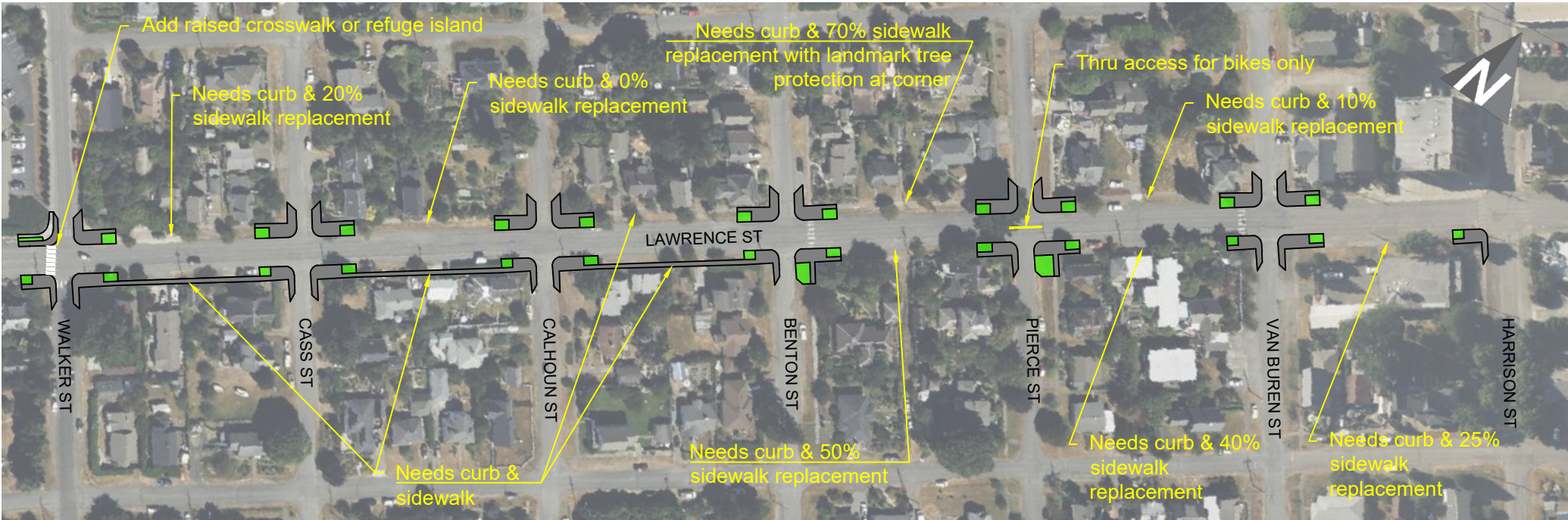
Drive Lane & Parking Space = 40'-42'



Lawrence Street (Harrison to Walker) - Proposed

Maintain 66' Back of Walk to Back of Walk
Reconfigure User Space on Lawrence Street





Add raised crosswalk or refuge island

Needs curb & 20% sidewalk replacement

Needs curb & 0% sidewalk replacement

Needs curb & 70% sidewalk replacement with landmark tree protection at corner

Thru access for bikes only

Needs curb & 10% sidewalk replacement

LAWRENCE ST

WALKER ST

CASS ST

CALHOUN ST

BENTON ST

PIERCE ST

VAN BUREN ST

HARRISON ST

Needs curb & sidewalk

Needs curb & 50% sidewalk replacement

Needs curb & 40% sidewalk replacement

Needs curb & 25% sidewalk replacement